

PE and Games Kit [Boys and Girls]



OR



Male / female fit short sleeved sports top

+



Compulsory

Long sleeve reversible sports top in black/purple with school logo or

Short-sleeved sports top in black/purple with school logo + long sleeved hooded top in black/purple with school logo.

Black shorts or a skort* in either plain black or black/purple to match the top

Black football socks

Trainers (no pumps) - these may be branded and do not have to be plain black.

Football boots (boys only)

* A skort looks like a short skirt but has modesty short leggings underneath

Optional Extra Kit

Black tracksuit bottoms in plain black (winter use only)

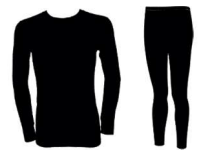
Skins – top/bottoms in plain black (to wear under compulsory kit in winter)

Football boots (girls)

Black sports hijab

All parents/carers are encouraged to provide their children with shin guards and gum shields to prevent injuries in Football, Hockey and Rugby.

We strongly recommend that all items of clothing should be clearly labelled with the student's name.



STUDENTS NOT PARTICIPATING MUST ALSO HAVE FULL PE KIT AS THEY WILL HAVE A ROLE IN ALL LESSONS AS A COACH, OBSERVER OR REFEREE

YOU MUST ALWAYS HAVE A FULL PE KIT